



Kingsway Park Mini Meadow

WARMLEY COMMUNITY NATURE RESERVE

AVON WILDLIFE TRUST SHORT IMPACT SUMMARY

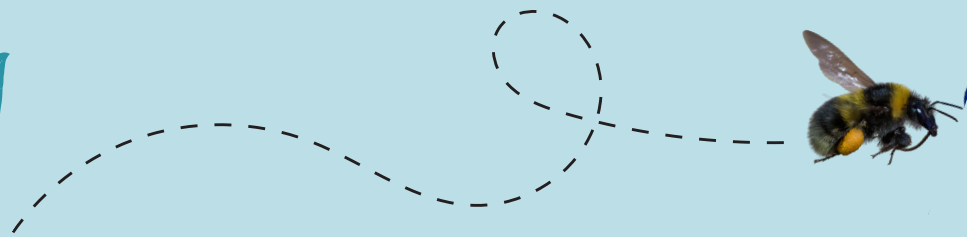


Avon
Wildlife Trust


South Gloucestershire
Council

OVERVIEW

INTRODUCTION



The Warmley Community Nature Reserve (CNR) project, delivered by Avon Wildlife Trust in partnership with South Gloucestershire Council, set out to build local nature connection, support urban wildlife, and encourage residents to take collective action for nature. This summary focuses on the key impacts achieved across community engagement, habitat creation, nature connectedness, and resident-led leadership.

THE NUMBERS

WHAT HAVE WE ACHIEVED



**1440M2
HABITAT CREATION
IN GARDENS AND
SHARED SPACES**

**227 FACEBOOK
MEMBERS**



**175
REGISTERED
GARDENS**



**3 ACRES REGISTERED
AS WILDLIFE
FRIENDLY**



**1242 PEOPLE
ENGAGED**



Hedgehog

Equivalent to 2 Premier League football pitches of nature-rich space, including orchards, meadows, and ponds!



**44 WALKS,
WORKSHOPS &
EVENTS**

COMMUNITY ENGAGEMENT

The project engaged over 1,200 residents through events, workshops, conversations and local activities. Engagement continued to grow beyond the designated Nature Action Zone, demonstrating widespread interest in taking action for nature across Warmley. A newly formed residents' group — The Warmley Flock — became a central driver of local engagement, running community events, film screenings, stalls, and nature activities. The project built strong foundations for long-term community organising and leadership.

HABITAT CREATION & BIODIVERSITY GAINS

Residents created and enhanced wildlife-friendly habitats across private gardens and shared spaces, contributing more than 920m² of improved garden habitat and 292m² of enhanced community space. Actions included tree planting, pond creation, hedgerow enhancements and establishing mini meadows.

Wildlife monitoring kits helped residents observe species in their gardens, encouraging further habitat creation and increased understanding of local wildlife needs.

IMPACT

COMMUNITY CONNECTIONS

“Working with the Warmley Flock has strengthened my local connections, meeting people who share my interests/passions.”

The project has helped foster new connections, and respondents appreciated sharing their wildlife experiences with like-minded people in their neighbourhood.

“Finding like minds, learning lots of things from others, appreciating and admiring the people from AWT and South Glos, awareness of other groups with like minds, feeling of doing good things, increased understanding of the help and support that exists.”

The Facebook group also provides a space for residents to continue to support each other and showcase a shared joy in the nature that surrounds them.

“I value the Facebook group for learning from others and sharing nature sightings. It's a place I can get help or advice too when needed.”

NATURE CONNECTEDNESS, HEALTH & WELLBEING



100% of respondents agreed **the project felt meaningful**, while **80%** reported **improved wellbeing** and **70%** noted **increased social interactions** and better mental health.

Participants reported noticing more wildlife, feeling more connected to their community, and experiencing a mindset shift towards supporting nature in daily life.



Easy Ecology and Nature Connection Walk

KNOWLEDGE, SKILLS & CONFIDENCE

Workshops, walks, online courses and practical skill-building gave residents the tools to make ecological improvements at home and in shared spaces. Many residents took further steps independently, building ponds, planting wildflowers, and installing habitat features.

90% of respondents agreed their wildlife knowledge increased, and **95%** felt more confident taking action for nature.

80% of participants stated that they would not have taken action for nature if Avon Wildlife Trust had not supported them.

“I've experienced the difference you can make. Learnt about how I can help, planting for wildlife, habitat for wildlife, saving wildlife when it needs a helping hand”

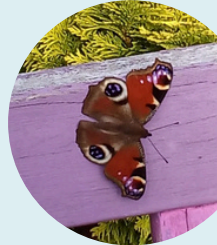


Tree ID Walk

CHANGES IN ATTITUDES, BEHAVIOUR AND AWARENESS OF NATURE ON THEIR DOORSTEP

Our aim through this project was to increase awareness, understanding and empathy for the natural world, resulting in behaviour change and more pro-environmental actions.

"I've noticed wood lice nesting, caterpillars, moths, butterflies, lace wings, frogs, foxes, blue tits, Great tits, goldfinches, robins, sparrowhawks, bats, ladybirds, and countless others."



The project has fostered people's connection to nature and that they are noticing more wildlife, which research shows can be the first steps towards more pro-environmental behaviour.



"I feel more aware of the nature and wildlife in my garden, and I want to help and improve it, and share any updates with my new friends in the Facebook group."



Bug Hotel at William Champions Garden

The screening of "My Garden of a Thousand Bees" event particularly had broadened people minds about the world of bees and other pollinators.

"Working with you guys has really changed my perspective on how I approach gardening....When I saw a bee, I used to just try and shoo it away and carry on working, but now I stop and watch it do its thing, take an interest in what it's doing, have a moment to appreciate and learn about them, and try to grow things that will help them and attract more of them. It's quite a mindset shift, from seeing them as a nuisance to seeing them as part of what it's all about."



Tree Giveaway at Warmley Waiting Room



Nature Explorer's Event



Bird Identification Walk

STORY OF CHANGE

MYLES & JEN, KINGSWAY PARK

Myles and Jen in Kingsway Park became community leaders in transforming a small space for nature into a thriving wildlife haven. After signing up to the Community Nature Reserve and receiving an initial visit from Avon Wildlife Trust, Myles removed decking and concrete to make a pond and mini meadow. These changes have provided vital habitat for wildlife and a peaceful space for his mum, Jen—whom he cares for full-time—to enjoy and connect with nature.

“Now we’ve got birds, bees, butterflies—and footprints from mammals too,” he says. “It’s lovely to listen to the water, and we’re glad we kept it fish-free for the wildlife.”

The full case study is available to view in the Avon Wildlife Trust website here:

<https://www.avonwildlifetrust.org.uk/team-wilder-story-warmley-myles-and-jen>



Myles & Jen, Kingsway Park



STORY OF CHANGE

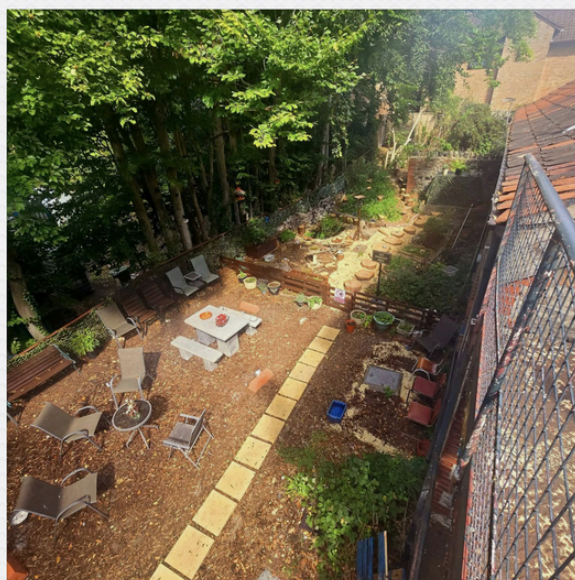
THE WARMLEY CLOCKTOWER

Warmley Clocktower is a local charity which provides affordable space for groups to hire for classes, courses, training, meetings, and workshops within a beautiful historic building. We have been supporting Phil Newman, their security volunteer, to help turn their previously concrete back yard into a wildlife haven. Following an advisory visit from Avon Wildlife Trust, Phil was inspired to enhance the space.

“You gave me some ideas and made me more determined to make this a special place for wildlife—including insects, not just mammals. A haven where it thrives.”

Phil has since created a wildlife pond, installed bird and bat boxes, allowed wildflowers and bramble to grow, planted a wide range of native wildflower species, built a large soil and log bank, all to boost biodiversity.

The full case study is available on the Avon Wildlife Trust website here: [Team Wilder story Warmley Clock Tower | Avon Wildlife Trust](#)



Warmley Clocktower



RESIDENT LEADERSHIP & LONG-TERM CAPACITY

The Warmley Flock emerged as a committed local leadership group, running their own events and mobilising neighbours. Individual stories — such as Myles & Jen’s garden transformation or Phil’s creation of a wildlife haven at Warmley Clocktower — demonstrate the project’s long-term legacy. These leaders now have the confidence, networks and motivation to inspire their neighbours and sustain action beyond the project period.

LESSONS LEARNED & RECOMMENDATIONS

Key lessons include the importance of early community involvement in project design, clarity between partner organisations, and the need for flexible, community-led approaches.

- Prioritise investment in communities that actively demonstrate their motivation to take action on climate and nature and consult with key landowners during project development to identify opportunities and potential barriers.
- Build in time for co-creation, involving community members and partners early to shape project scope and identify both social and environmental benefits.
- Engage communities from the start to create a shared vision and agree on outcomes together.
- Provide education on the importance of monitoring and establish processes for data collection, and species tracking.



SUMMARY & CONCLUSION

The Warmley Community Nature Reserve project successfully strengthened community cohesion, improved nature connection, and equipped residents with the skills and confidence to take long-term action for wildlife. The project catalysed a shift from a community growing in connection to one increasingly united through shared care for local nature.

LEGACY

Resident-led action is now embedded, with The Warmley Flock continuing to champion local nature recovery beyond the project period.

WHAT'S NEXT?

Avon Wildlife Trust will continue to work with South Gloucestershire Council developing a regional programme offering training, peer support and ecological advice for emerging and existing Community Nature Reserve groups.



